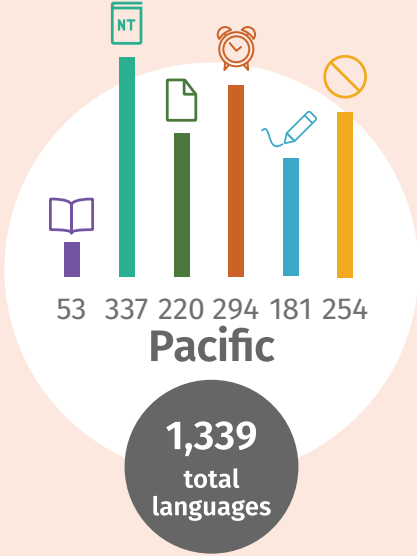
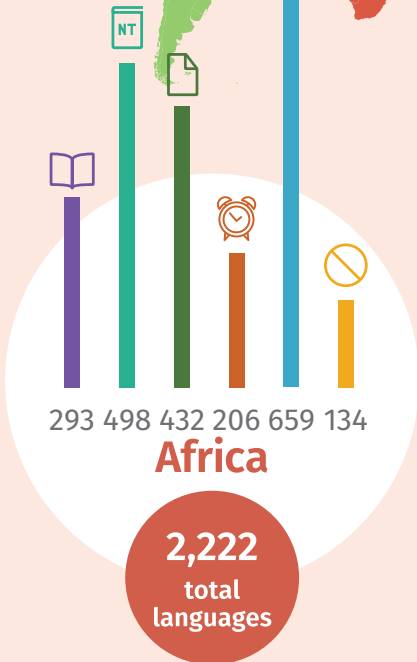
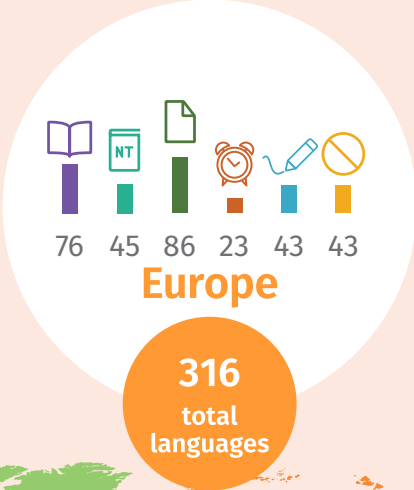
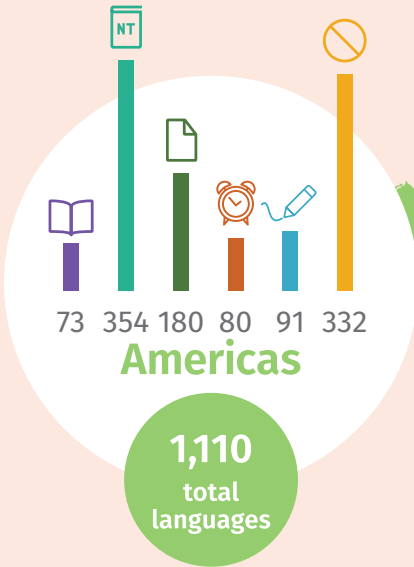
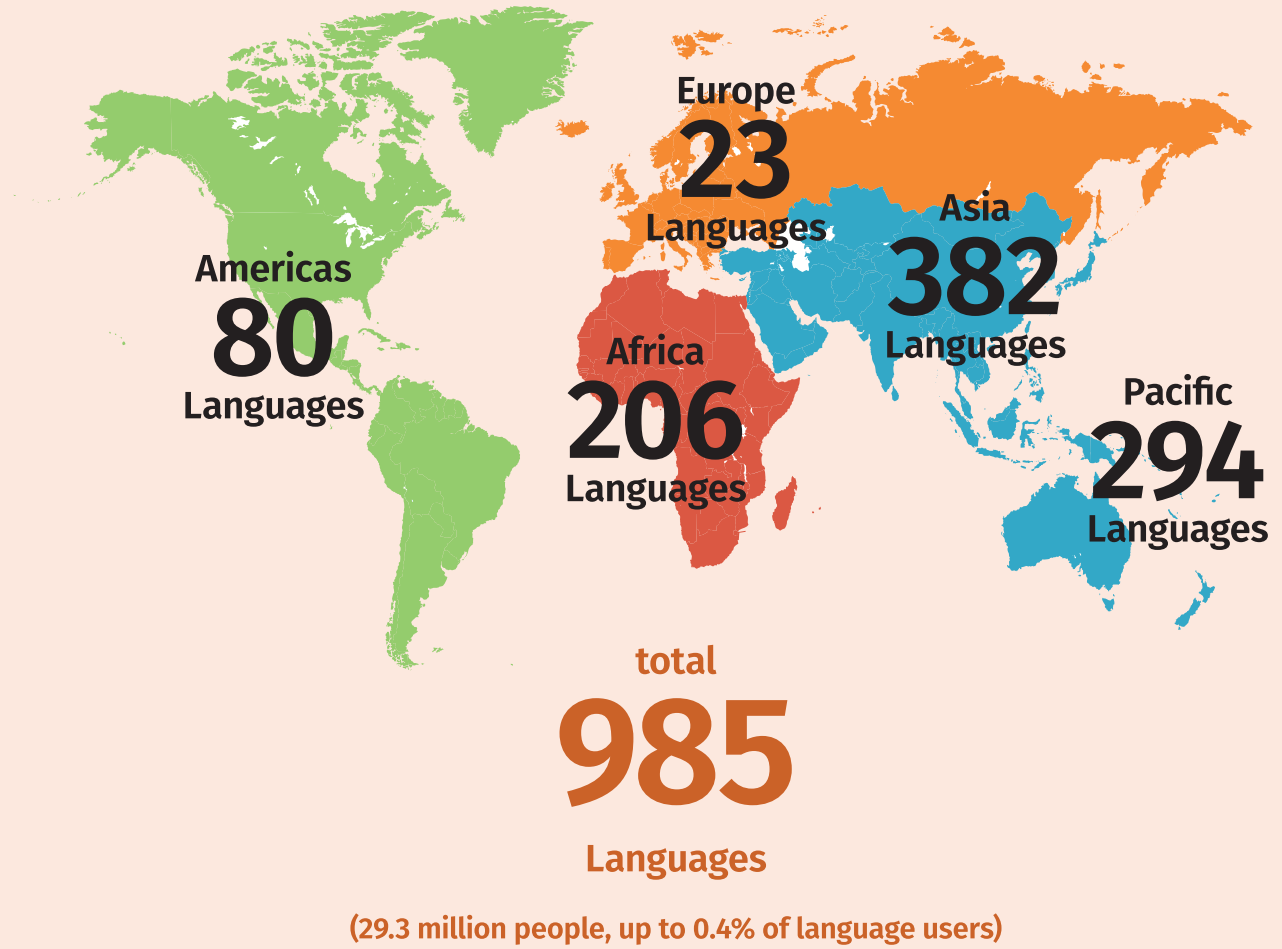


Scripture access by region

For simplicity, each language is counted only once and assigned to a single region with all users attached to that location.



Need Bible translation to start



The numbers on the map refer to languages where work is already being requested or is likely to be needed.

About these statistics

Wycliffe Global Alliance compiles Scripture access statistics annually from data provided through **ProgressBible** by Bible translation organisations and partners. Data is based on the most recently available information about first language users in SIL's **Ethnologue**.