

# Global Scripture Access 2024



## KEY



Full Bible



New Testament



Portions



Need Bible translation to start

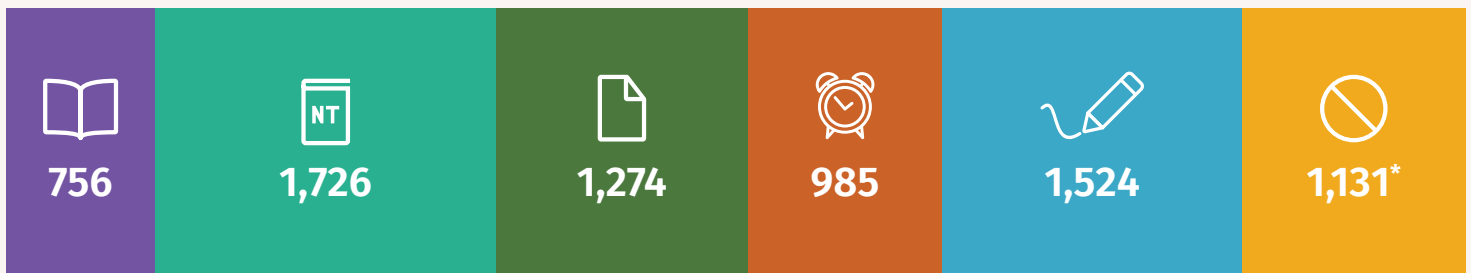


Initial work in progress



No Scripture, likely no need

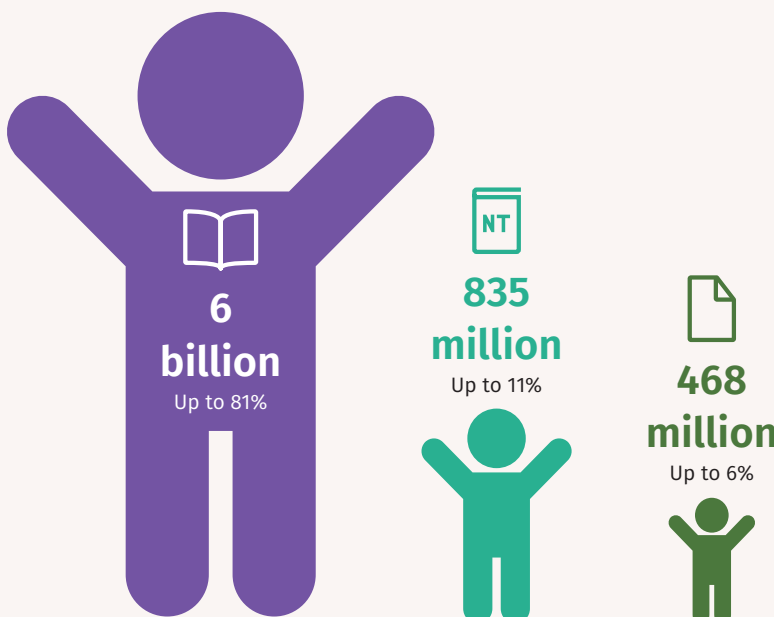
## Languages with and without Scripture



**7,396** known living languages, including 392 sign languages

\* In most cases, the people use another language which already has at least some Scripture. Sometimes, their first language is disappearing from use altogether.

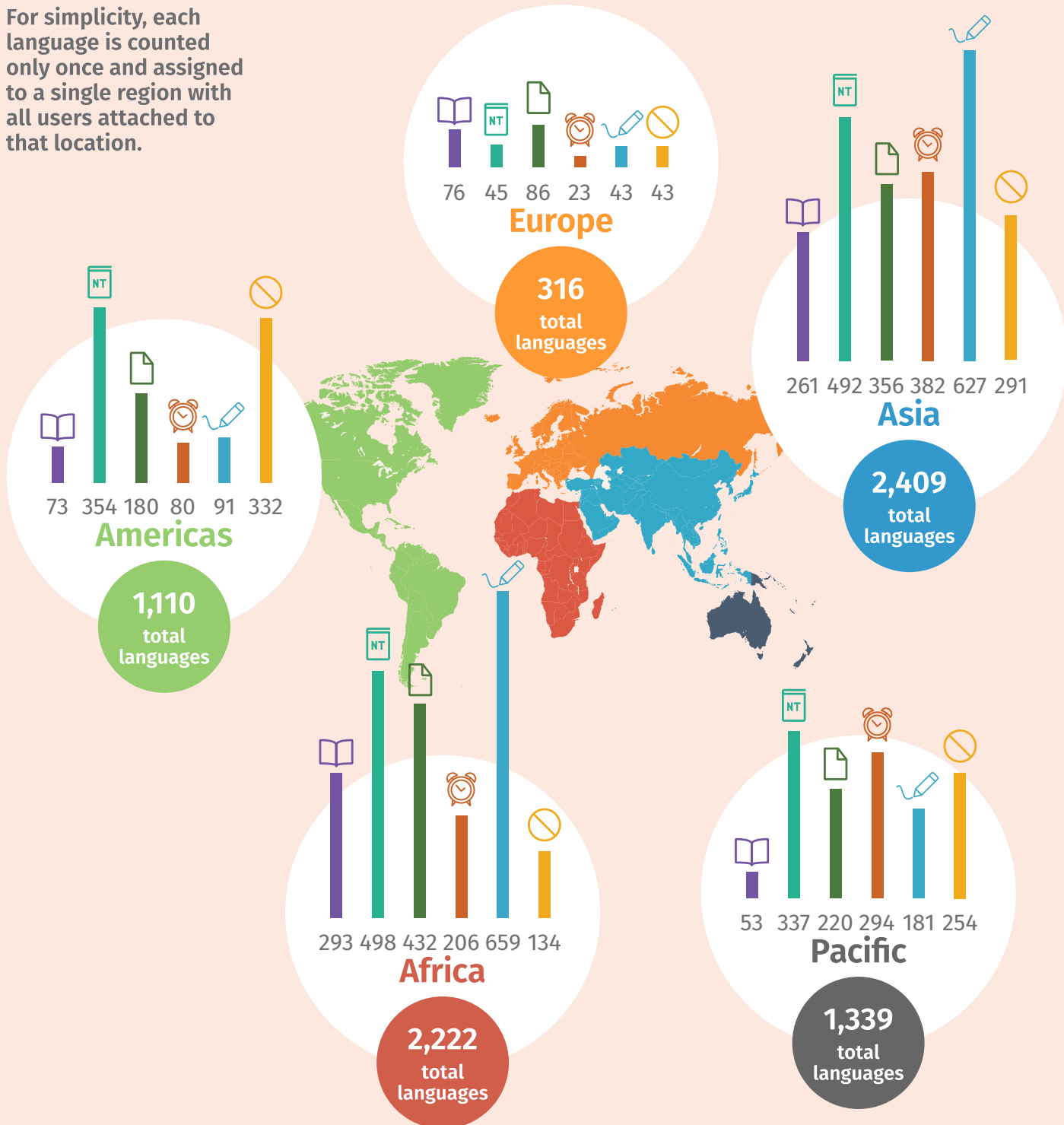
## People with and without Scripture



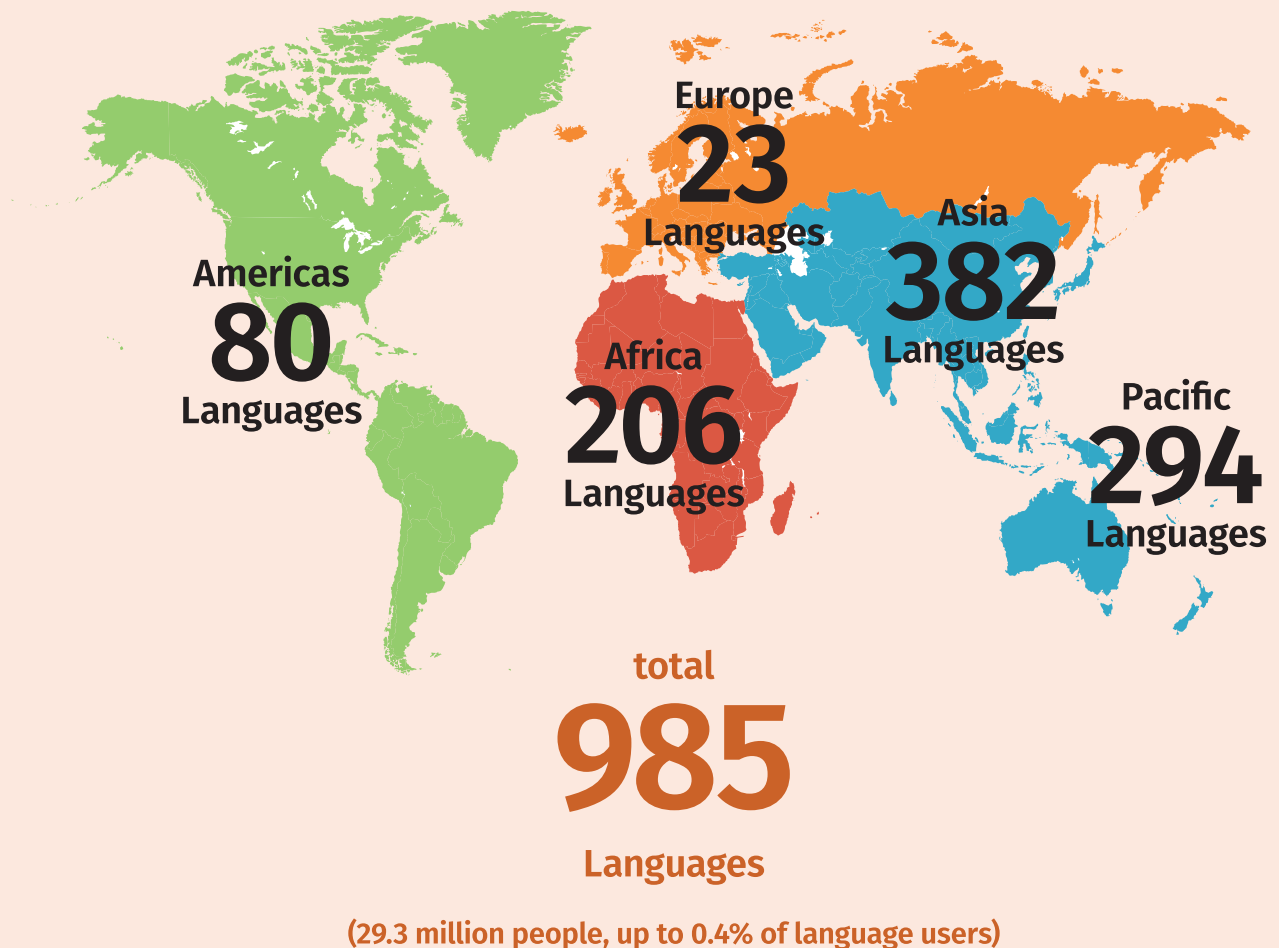
According to SIL's Ethnologue, 7.45 billion people use the world's 7,396 known languages. However, language user statistics tend to lag behind actual population statistics. The 2024 global population is estimated at 8.12 billion. For statistical agreement, percentages used here are based on the Ethnologue population number.

## Scripture access by region

For simplicity, each language is counted only once and assigned to a single region with all users attached to that location.



## Need Bible translation to start



The numbers on the map refer to languages where work is already being requested or is likely to be needed.

## About these statistics

Wycliffe Global Alliance compiles Scripture access statistics annually from data provided through **ProgressBible** by Bible translation organisations and partners. Data is based on the most recently available information about first language users in SIL's **Ethnologue**.